

FlinQ Drinking Fountain for Dogs & Cats

FQC 8t60

Thanks for purchasing this FlinQ-product! To ensure continuous operation and accuracy, please read these operating instructions carefully before use and save this manual for future use. Passing certain procedures may result in incorrect reading. We hope that you will enjoy using your new FlinQ product.

If by any chance the item is damaged, defective or broken, you are covered with warranty! Please contact the manufacturer for any questions, concerns or suggestions at the email address as mentioned in this manual.



V1 User Manual

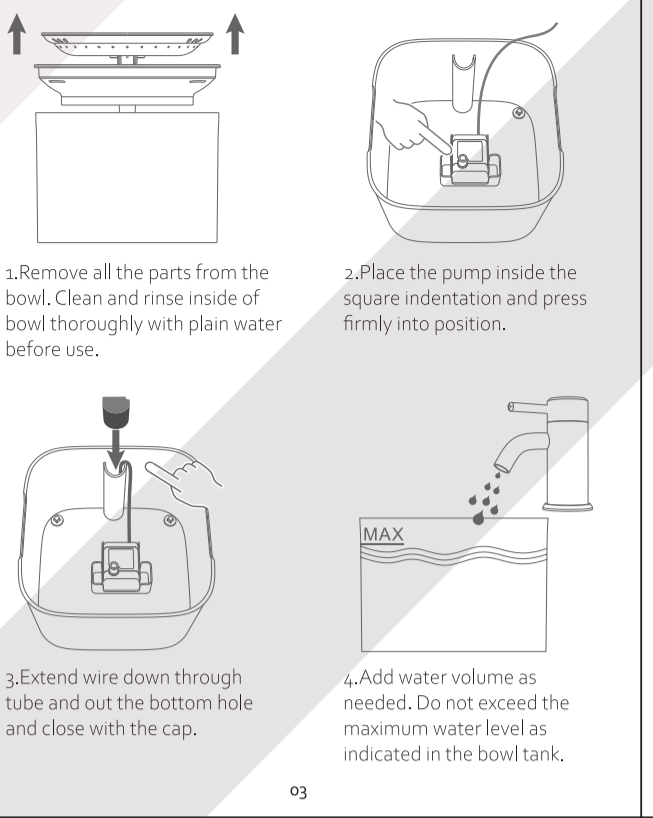
01 02 03 04 05 06 07 08 09 10 11

Components:

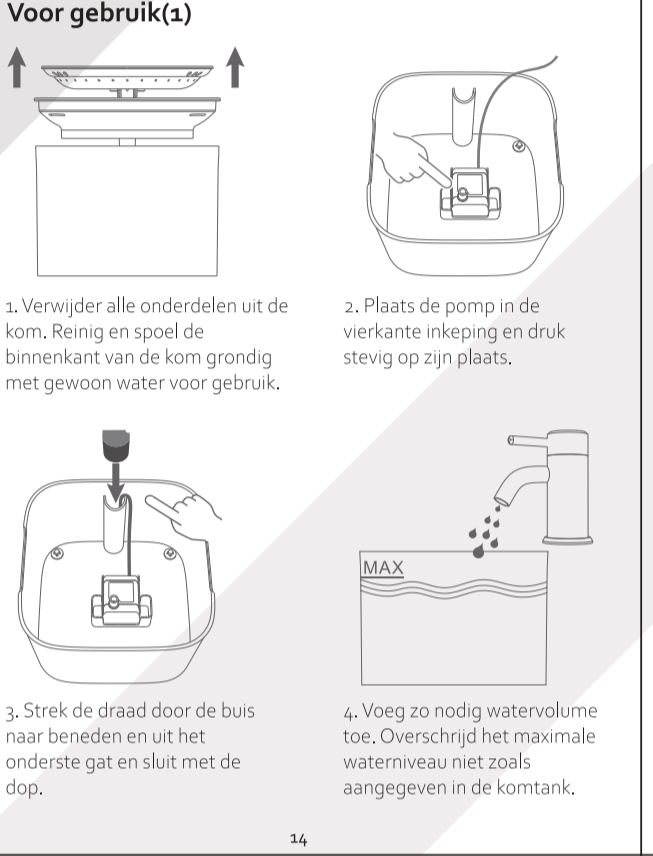
- 1. Flower
- 2. Fountain Tray
- 3. Charcoal Filter
- 4. Lid
- 5. AC Pump
- 6. Bowl

Adapter	Input voltage AC 100-240V 50/60 Hz Output power 12V Voltage AC 210V 50Hz-60Hz Power consumption 2W
Pump	Capacity 50L AC 200V-240V AC 50/60Hz Carbon Filter 1000g Slow water nozzle 1PCS Flower water nozzle 1PCS

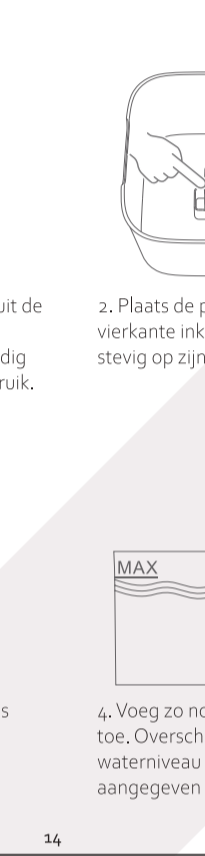
Before use guide(1)



Before use guide(2)



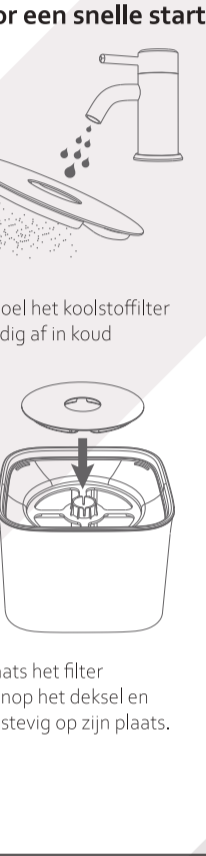
Plug in and use



Trouble Shooting and product maintenance

Cleaning the pump is essential to the longevity of fountain.

Different settings for water flow



How often should I clean the fountain?

The fountain should be cleaned at least once a week.

What is the fountain power consumption?

This fountain runs on a super low power AC pump with power adapter.

Disclaimer

This information in this document is subject to change without notice.

FlinQ

FlinQ is a trademark of FlinQ Commerce.

DECLARATION OF CONFORMITY

CE mark and other certification logos.

FlinQ Drinkfontein voor Honden & Katten

FQC8t60

Lees deze gebruiksaanwijzing voor gebruik zorgvuldig door om een continue werking en nauwkeurigheids te garanderen en bewaar deze gebruiksaanwijzing voor toekomstig gebruik.



V1 Handleiding

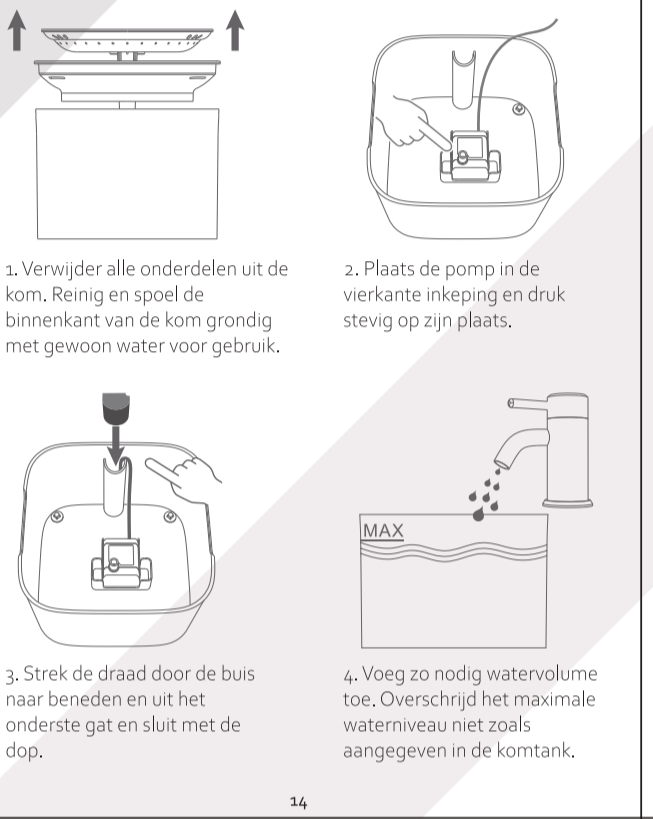
12 13 14 15 16 17 18 19 20 21 22

Components:

- 1. Bloem
- 2. Fonteinbak
- 3. Koolstoffilter
- 4. Deksel
- 5. AC-pomp
- 6. Komtank

Adapter	Ingangspanning AC 100-240V 50/60 Hz Output vermogen 12V Spanning AC 210V 50Hz-60Hz Stroomverbruik 2W
Pomp	Capaciteit 50L AC 200V-240V AC 50/60Hz Koolstoffilter 1000g Kort watermondstuk 1PCS Bloemen-watermondstuk 1PCS

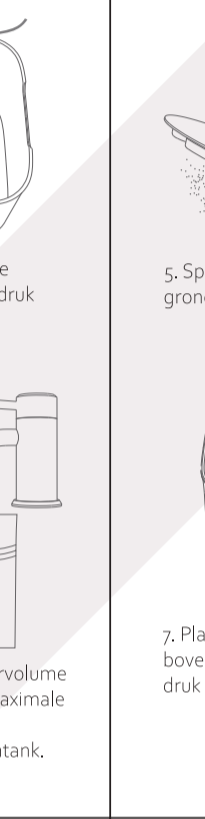
Voor gebruik(1)



Voor een snelle start(2)



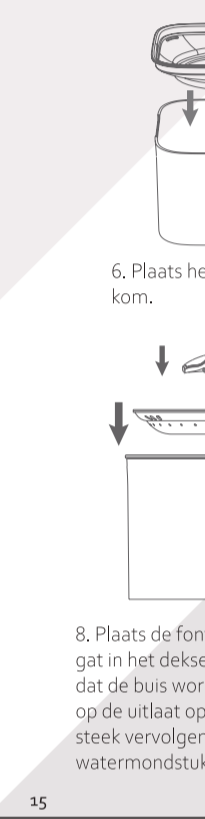
Plug in en gebruik



Probleemoplossing en productonderhoud

Het reinigen van de pomp is essentieel voor de levensduur van de fontein.

Verschillende instellingen voor waterstroom



Wat is het stroomverbruik van de fontein?

Dit fontein werkt op een zeer lage AC-pomp met voedingsadapter.

Disclaimer

This information in this document is subject to change without notice.

FlinQ

FlinQ is a trademark of FlinQ Commerce.

DECLARATION OF CONFORMITY

CE mark and other certification logos.

FlinQ Trinkbrunnen für Hunde & Katzen

FQC8t60

Lesen Sie dieses Handbuch vor dem Gebrauch sorgfältig durch, um einen kontinuierlichen Betrieb und Genauigkeit zu gewährleisten, und bewahren Sie dieses Handbuch zum späteren Nachschlagen auf.



V1 Handbuch

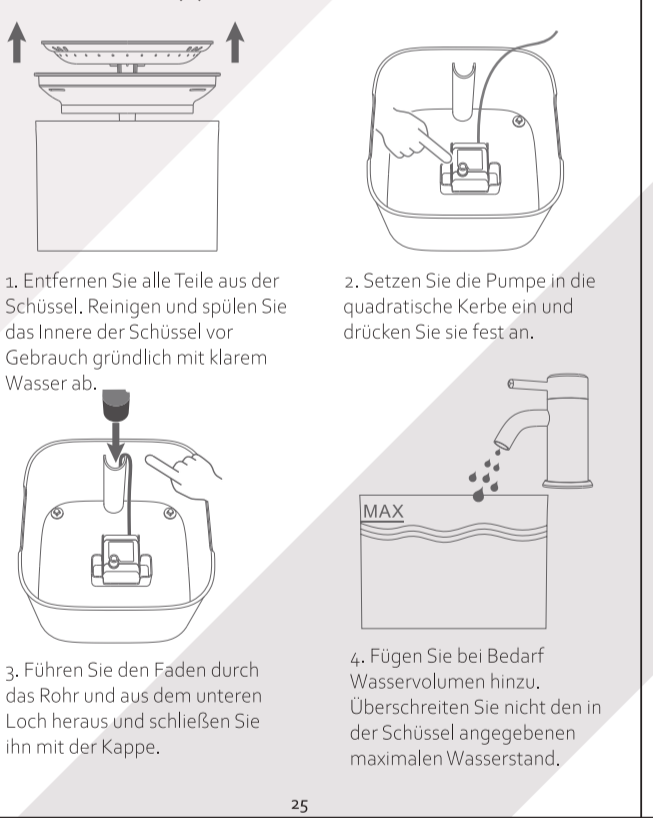
23 24 25 26 27 28 29 30 31 32 33 34

Komponenten:

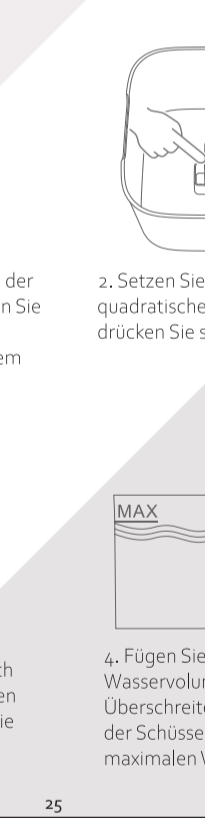
- 1. Blume
- 2. Brunnenbecken
- 3. Kohlefilter
- 4. Deckel
- 5. Wechselstrompumpe
- 6. Schüssel

Adapter	Eingangsspannung AC 100-240V 50/60 Hz Ausgangsleistung 12V Spannung AC 210V 50Hz-60Hz Stromverbrauch 2W
Pumpe	Kapazität 50L Adapter 1000g Wechselstrompumpe 1PCS Kohlefilter 1PCS Kurz Wasserdüse 1PCS Blumenwasserdüse 1PCS

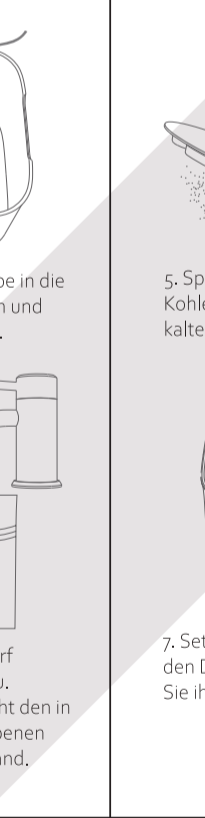
Vor Gebrauch (1)



Für einen schnellen Start (2)



Einstecken und verwenden



Fehlerbehebung und Produktwartung

Die Reinigung der Pumpe ist für die Lebensdauer des Brunnens unerlässlich.

Unterschiedliche Einstellungen für den Wasserfluss



Was ist der Stromverbrauch des Brunnens?

Dieser Brunnen läuft mit einer sehr niedrigen Wechselstrompumpe mit Netzteil.

Disclaimer

This information in this document is subject to change without notice.

FlinQ

FlinQ is a trademark of FlinQ Commerce.

DECLARATION OF CONFORMITY

CE mark and other certification logos.

FlinQ Fontaine à Eau pour Chiens et Chats

FQC8t60

Lisez attentivement ce manuel avant utilisation pour garantir un fonctionnement et une précision continus et conservez ce manuel pour référence future.



V1 Manuel

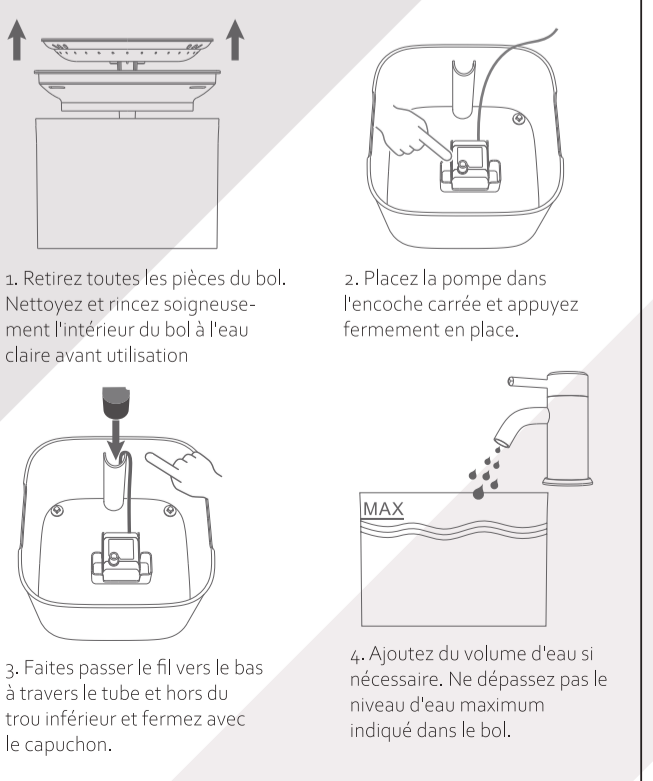
35 36 37 38 39 40 41 42 43 44

Composants

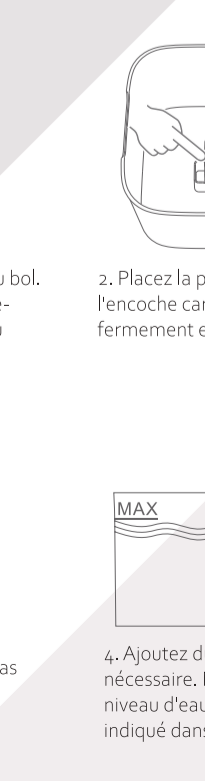
- 1. Fleur
- 2. Bassin de fontaine
- 3. Filtre à carbon
- 4. Couverture
- 5. Pompe AC
- 6. Bol

Adaptateur	Tension d'entrée AC 100-240V 50/60 Hz Puissance de sortie 12V Tension AC 210V 50Hz-60Hz Consommation électrique 2W
Pompe	Capacité 50L Adaptateur 1000g Pompe à courant alternatif 1PCS Filtre à charbon 1PCS Buse d'eau douce 1PCS Buse d'eau florale 1PCS

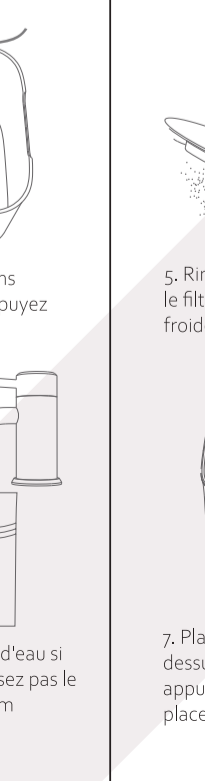
Avant utilisation (1)



Avant un démarrage rapide (2)



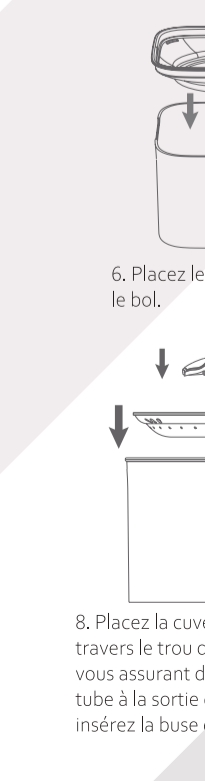
Branchez et utilisez



Dépannage et maintenance du produit

Le nettoyage de la pompe est essentiel pour la durée de vie de la fontaine.

régages différents pour le débit d'eau



À quelle fréquence dois-je nettoyer la fontaine?

La fontaine doit être nettoyée au moins une fois par semaine.

Disclaimer

This information in this document is subject to change without notice.

FlinQ

FlinQ is a trademark of FlinQ Commerce.

DECLARATION OF CONFORMITY

CE mark and other certification logos.

WARNINGS

SAFETY TIPS AND IMPORTANT SAFETY INSTRUCTIONS SAVE THESE INSTRUCTIONS FOR FUTURE REFERENCE. Only the proper observation of these installation, electrical and maintenance guidelines will ensure the safe and efficient use of this drinking fountain. This manual is not to be used as a reference for prevention possible harm to the environment or human health from uncontrolled waste disposal, please separate this from other types of wastes and recycle, responsibly to promote the sustainable reuse of natural resources.

Correct Disposal Of This Product

(Waste Electrical & Electronic Equipment) This marking shown on the product or its literature, indicates that it should not be disposed with other waste and should be taken to a collection point for the treatment and recycling of these types of products.

DECLARATION OF CONFORMITY

I, the undersigned, hereby declare that the product conforms to the requirements of the relevant European Union harmonization standards.

Waarschuwingen

VEILIGHEIDSTIPS EN BELANGRIJKE VEILIGHEIDSTRUCTURES BEWAAR DEZE INSTRUESIES VOOR TOEKOMSTIGE REFERENTIE. Alleen de juiste naleving van deze installatie-, elektrische en onderhoudsinstructies zorgt voor een veilig en efficiënt gebruik van de fontein.

Waarschuwingen

Deze markeering op het product of de bijbehorende literatuur geeft aan dat het aan het einde van zijn levensduur niet ander huishoudelijk afval mag worden verwijderd. Om mogelijke schade aan het milieu of de menselijke gezondheid door ongerechtvaardigde afvalafname te voorkomen, moet dit scheiden van andere soorten afval en het op verantwoorde wijze recylen om het duurzame hergebruik van materiele hulpbronnen te bevorderen.

Correcte verwijdering van dit product

(Waste Electrical & Electronic Equipment) This marking shown on the product or its literature, indicates that it should not be disposed with other waste and should be taken to a collection point for the treatment and recycling of these types of products.

Garantie

The warranty begins on the date of purchase and expires after 24 months. The warranty period is considered to have started three months after the date of manufacturing indicated on the product or as derived from the serial number of the product if any defect due to faulty materials and/or workmanship occurs within the warranty period.

Garantie

De garantie begint op de datum van aankoop en vervalt na 24 maanden. De garantieperiode wordt geacht te zijn begonnen drie maanden na de productiedatum die op het product is vermeld of die is afgeleid van het serienummer van het product. Als zich binnen de garantieperiode een defect voordoet als gevolg van defecte materialen en/of fabricage, zal FlinQ geregelde treffen voor service.

Garantie

The warranty begins on the date of purchase and expires after 24 months. The warranty period is considered to have started three months after the date of manufacturing indicated on the product or as derived from the serial number of the product if any defect due to faulty materials and/or workmanship occurs within the warranty period.

Garantie

De garantie begint op de datum van aankoop en vervalt na 24 maanden. De garantieperiode wordt geacht te zijn begonnen drie maanden na de productiedatum die op het product is vermeld of die is afgeleid van het serienummer van het product. Als zich binnen de garantieperiode een defect voordoet als gevolg van defecte materialen en/of fabricage, zal FlinQ geregelde treffen voor service.

Garantie

The warranty begins on the date of purchase and expires after 24 months. The warranty period is considered to have started three months after the date of manufacturing indicated on the product or as derived from the serial number of the product if any defect due to faulty materials and/or workmanship occurs within the warranty period.

Garantie

De garantie begint op de datum van aankoop en vervalt na 24 maanden. De garantieperiode wordt geacht te zijn begonnen drie maanden na de productiedatum die op het product is vermeld of die is afgeleid van het serienummer van het product. Als zich binnen de garantieperiode een defect voordoet als gevolg van defecte materialen en/of fabricage, zal FlinQ geregelde treffen voor service.

WARNINGS

SAFETY TIPS AND IMPORTANT SAFETY INSTRUCTIONS SAVE THESE INSTRUCTIONS FOR FUTURE REFERENCE. Only the proper observation of these installation, electrical and maintenance guidelines will ensure the safe and efficient use of this drinking fountain. This manual is not to be used as a reference for prevention possible harm to the environment or human health from uncontrolled waste disposal, please separate this from other types of wastes and recycle, responsibly to promote the sustainable reuse of natural resources.

Correct Disposal Of This Product

(Waste Electrical & Electronic Equipment) This marking shown on the product or its literature, indicates that it should not be disposed with other waste and should be taken to a collection point for the treatment and recycling of these types of products.

Waarschuwingen

VEILIGHEIDSTIPS EN BELANGRIJKE VEILIGHEIDSTRUCTURES BEWAAR DEZE INSTRUESIES VOOR TOEKOMSTIGE REFERENTIE. Alleen de juiste naleving van deze installatie-, elektrische en onderhoudsinstructies zorgt voor een veilig en efficiënt gebruik van de fontein.

Correcte verwijdering van dit product

(Waste Electrical & Electronic Equipment) This marking shown on the product or its literature, indicates that it should not be disposed with other waste and should be taken to a collection point for the treatment and recycling of these types of products.

Garantie

The warranty begins on the date of purchase and expires after 24 months. The warranty period is considered to have started three months after the date of manufacturing indicated on the product or as derived from the serial number of the product if any defect due to faulty materials and/or workmanship occurs within the warranty period.

Garantie

De garantie begint op de datum van aankoop en vervalt na 24 maanden. De garantieperiode wordt geacht te zijn begonnen drie maanden na de productiedatum die op het product is vermeld of die is afgeleid van het serienummer van het product. Als zich binnen de garantieperiode een defect voordoet als gevolg van defecte materialen en/of fabricage, zal FlinQ geregelde treffen voor service.

Garantie

The warranty begins on the date of purchase and expires after 24 months. The warranty period is considered to have started three months after the date of manufacturing indicated on the product or as derived from the serial number of the product if any defect due to faulty materials and/or workmanship occurs within the warranty period.

Garantie

The warranty begins on the date of purchase and expires after 24 months. The warranty period is considered to have started three months after the date of manufacturing indicated on the product or as derived from the serial number of the product if any defect due to faulty materials and/or workmanship occurs within the warranty period.

Garantie

The warranty begins on the date of purchase and expires after 24 months. The warranty period is considered to have started three months after the date of manufacturing indicated on the product or as derived from the serial number of the product if any defect due to faulty materials and/or workmanship occurs within the warranty period.

Garantie

The warranty begins on the date of purchase and expires after 24 months. The warranty period is considered to have started three months after the date of manufacturing indicated on the product or as derived from the serial number of the product if any defect due to faulty materials and/or workmanship occurs within the warranty period.

DECLARATION OF CONFORMITY

I, the undersigned, hereby declare that the product conforms to the requirements of the relevant European Union harmonization standards.

DECLARATION OF CONFORMITY

I, the undersigned, hereby declare that the product conforms to the requirements of the relevant European Union harmonization standards.

DECLARATION OF CONFORMITY

I, the undersigned, hereby declare that the product conforms to the requirements of the relevant European Union harmonization standards.

DECLARATION OF CONFORMITY

I, the undersigned, hereby declare that the product conforms to the requirements of the relevant European Union harmonization standards.